



MARBLE

The Free Software Geobrowser



Marble – a Virtual Globe ...

Marble is a Virtual Globe and World Atlas that you can use to learn more about Earth: You can pan and zoom around and you can look up places and roads. A mouse click on a place label will provide the respective Wikipedia article.

... and a polished jewel

Of course it's also possible to measure distances between locations or watch the current cloud cover. Marble offers different thematic maps: A classroom-style topographic map, a satellite view, street map, earth at night and temperature and precipitation maps. All maps include a custom map key, so it can also be used as an educational tool for use in class-rooms. For educational purposes you can also change date and time and watch how the starry sky and the twilight zone on the map change.

In opposite to other virtual globes Marble also features multiple projections: Choose between a Flat Map ("Plate carré"), Mercator or the Globe.

The best of all: Marble is Free Software / Open Source Software and promotes the usage of free maps. And it's available for all major operating systems (Linux/Unix, MS Windows and Mac OS X).

Website: <http://www.marble-globe.com>

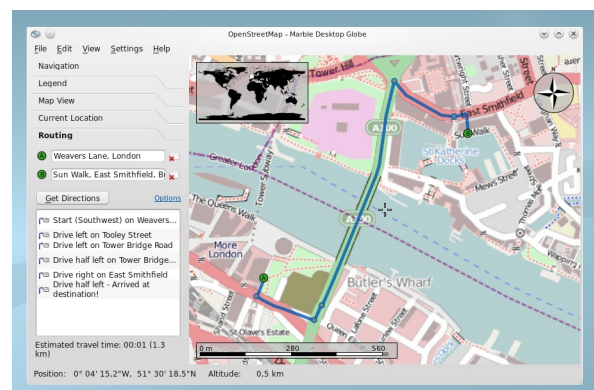
License: GNU LGPL 2+ (Open Source)

Version: 0.10.1, August 31st, 2010

OS: Linux, Windows, Mac OS X, MeeGo
Qt / C++

New Features in Marble 0.10

- **Online Routing**
- Bulk Download for Tile data for Offline Usage
- Support for **Multiple Layers**
- Support for **Gimp-like Filters** between Layers
- Quick and Dirty **WMS Support**
- Marble for Nokia's N900
- More Online Service Plugins



Marble is part of the KDE Education Project: <http://edu.kde.org>



MARBLE

The Free Software Geobrowser

Features

Easy to Use

Intuitive map navigation allows for panning and zooming. Map data is automatically being downloaded in the background and cached on the hard disc.

Standard Map Themes

Atlas, Satellite, OpenStreetMap, Plain Map, Earth at Night, Historical Map, Temperature, Precipitation and more.

Map Data (Tile Server Layouts)

Multiple layers of data can be specified (via XML) and blended via filters. Supported tile layout schemes include:

- OpenStreetMap
- Google Maps
- Experimental quick and dirty WMS support
- Custom Server Layouts (specified via XML)

Projections

Globe, Equirectangular, Mercator

Supported File Formats

- KML / Google Earth(TM) user data, no KMZ support
- GPX

Position Providers

GPS (via gpsd, GeoClue, Maemo 5 liblocation)

Routing

The user interface allows for entering routes via drag and drop. Via-points are supported.

- Online Routing: Open Routing Service (Europe only)

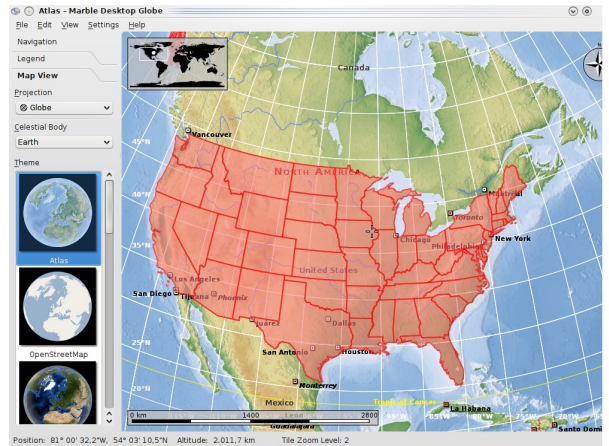
The development version of Marble provides

- Online Routing: Yours (worldwide)
- Offline Routing: Monav, Routino, Gosmore

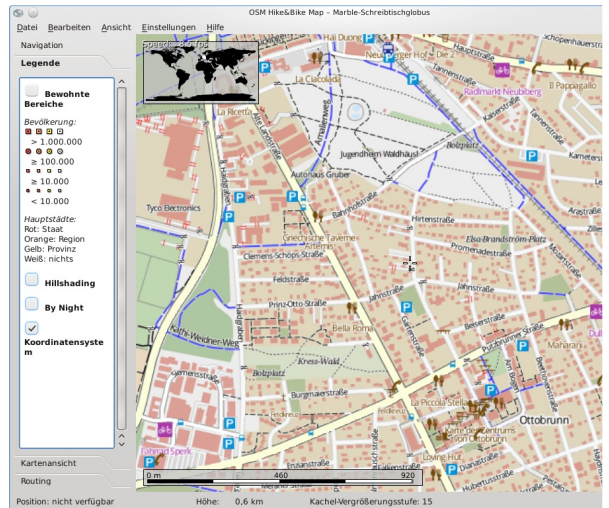
Wikipedia Integration

And more ...

A sophisticated plugin architecture makes Marble easily extensible for software developers.



A KML file displaying the US states in Marble



Hike and Bike map with multiple layers



Marble running on a Nokia N900 in a car

<http://www.marble-globe.com>



Marble is part of the KDE Education Project: <http://edu.kde.org>

